

**ISOCHI**

**ISOCHI**

**INNOVATION FIELD  
QUALITY WINS**

One -Stop Purchasing For PCB Consumables

**KUNSHAN SOCHI ELECTRONICS CO.,LTD**

TEL:0512-57151112\*8001 FAX:0512-57150029

E-MAIL:info@suchidz.com

HTTP:www.suchidz.com

AFTER SALE SERVICE:188-9685-3313

No.88 Qunyi Mining Area, North of Hengshan Road, Yushan  
Town, Kunshan City, Jiangsu Province, China,215300

Pressure Foot Cup + Tool Gripper + Air Cylinder  
Tool Change Pod + Tool Cassette + Collet+Brush

▶ One-Stop Solution for PCB Equipment/Accessories/Consumables

## Content/

Company Profile	03
Our Advantages	05
Product List	06
Product Introduction	07
PCB Machine	07-08
Maintenance Repair / Spindle Spares	09-10
Pressure Foot Cup	11-12
Air Cylinder	13-15
Tool Gripper	16
Tool Change Pod / Tool Cassette	17-18
Inspection Accessories	19-22
Other Accessories	23-24
Collet	25-28
Pressure Foot Insert	29-31
Pressure Foot Brush	32-33
Maintenance Grease & Rubber Roller	34
Bakelite Plate / Dust cover	35-36
Other Consumables	37-38

PCB drilling and forming one-stop supply  
To help the development of the electronics industry



## Company Profile/



### Professional Field

R&D pcb equipment /



### Excellent Quality

Strictly control by production, inspection, ex-warehouse, package, etc.



### Design Innovation

Kunshan sochi electronics company specialize in PCB, FPC equipment accessories, Mitsubishi Laser drill machine & brand drill machine (domestic & abroad) maintenance repair (for router) / spindle & maintenance for boards; non-standard spares manufacturing and OEM for hardware fitting, plastic items, fixture, mould spares. All of these ensure our quality meet or over customer's needs by excelsior technical team, advanced cnc equipment, inspection instruments Complete operation system for after-sales service to meet customer's need different customization, devoting to offer solution for automotive electronics / semi-conductor / PCB/SMT.



### Non-Standard Customization

Available specification, carefully select material, own production, equipped advanced production, advanced technology, rich experience, offer automation solutions for customers



### Overseas Market

USA, UK, Spain, India, Vietnam, Canada, Turkey, Brazil, Russia, Korea, Iran, Thailand, Tunis, Italy

## Business Tenet/

Kunshan Sochi Electronics Co., Ltd. is located in Kunshan City, Jiangsu Province, China. The company was established in 2017. Our mission is: Insist on making good PCB accessories and manufacturing high-quality products for customers! Customers are our God! We will give our customers with more and better products! Welcome to visit and negotiate business with us.

## Our strengths/

# 6 Advantages



<p><b>Technological Innovation</b></p>  <p>Quick Moulding Keep accurate originality for complicated curve surface &amp; functional structure hand board model</p>	<p><b>Short Production Cycle</b></p>  <p>Short Production Cycle Quick shipment,ensuring punctual delivery</p>	<p><b>Product Quality</b></p>  <p>Nice quality of material, high accuracy (up to 0.005mm)</p>
<p><b>Top in PCB industry</b></p>  <p>Our main customer group is on the top in the industry</p>	<p><b>Professional R &amp; D team</b></p>  <p>Strongly R&amp;D ability and 20 years of production experience</p>	<p><b>Confidentiality system</b></p>  <p>Multiple security measures top roctect, Proofing is more assured</p>

## Product List/

 <p><b>PCB Drilling Machine</b></p>	 <p><b>Pressure foot cup</b></p>
 <p><b>Air Cylinder</b></p>	 <p><b>Tool Gripper</b></p>
 <p><b>Inspection accessories</b></p>	 <p><b>Collet</b></p>
 <p><b>Brush</b></p>	 <p><b>Tool Cassette</b></p>
 <p><b>Pressure foot insert</b></p>	 <p><b>Pressure foot insert</b></p>

## Maintain Annual Maintenance Items

- |   |  |   |
|---|--|---|
| <b>1</b><br>Parameter Backup Before Working   | <b>2</b><br>Machine Level Adjustment     | <b>3</b><br>XY Origin Correction        |
| <b>4</b><br>Pressure Foot Flatness Adjustment | <b>5</b><br>Z Axis Zero Point Adjustment | <b>6</b><br>SPINLE Height Adjustment    |
| <b>7</b><br>Regulate $\psi 200$               | <b>8</b><br>Tool Height Confirmation     | <b>9</b><br>Dynamic RUN OUT Measurement |
| <b>10</b><br>CHECK MASTER Adjust              | <b>11</b><br>ALIGNMENT Adjust            | <b>12</b><br>Oil on Machine             |

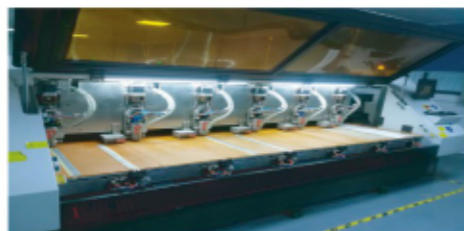
## Repair Spindle Repair

The spindles repaired by our company have passed the rigorous tests of the following steps:

1. Vibration test
2. Dynamic frequency conversion center circle deviation dynamic
3. Static test of rotor center circle deviation
4. Internal and external load test
5. Axial tail space movement test
6. Air flow water flow test
7. Electrical parameters
8. Clamp test of collet
9. Three phase coil impedance test
10. Grip torque test
11. Collet static run-out test



Maintenance of Mitsubishi laser drilling machine



CNC machine CNC drilling machine maintenance



Spindle repair & refurbishment



180krpm Air Spindle



80krpm Automatic Tool Change Spindle



60krpm Automatic Tool Change Spindle



42rpm Manual Tool Change Spindle



Armature



Armature



ABW110 Armature



D1331 Armature



Spindle Head



Spindle Water Jacket



Spindle Head Cap



Rear Waterway Seat for D1331 Spindle



Front Bearing



Rear Bearing



Thrust Bearing



Thrust Bearing



Spindle Pull Rod



Shrapnel



Ceramic Bearing



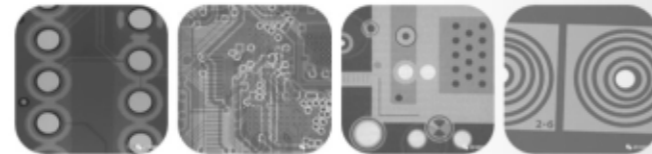
Coil

## X-RAY Inspection Machine

### Features

- X-ray tube is designed to meet various thickness detection
- Independent research and development of high-definition imaging system, easy judgment
- User-friendly software system, easy to operate
- Modular mechanical structure for easy maintenance
- Various software functions such as measurement and measurement
- 10-30x optical zoom for micro hole detection

The ISC1000 X-ray inspection machine is a cost-effective inspection product for the circuit board industry, providing high-quality defect detection for many types of circuit boards in the electronics industry. The ISC1000 adopts a self-developed high-definition real-time imaging system to perform high-definition imaging analysis of the defects of each layer of the drilling and subsequent steps in the PCB multi-layer circuit board production process. At the same time, the device adds point-to-point innovation in the detection image. Point-to-line, radius, concentricity and other accurate measurement functions, to facilitate engineers to conduct statistical analysis of production quality. Our high-definition real-time imaging system has greatly reduced the dependence of equipment on high-precision hardware devices such as light pipes and detectors. The stability, safety and service life of the equipment greatly reduce the energy consumption of the equipment. The operation is simple, stable and user-friendly. The company has a complete video and operation instruction manual for each device. The first-line operation technicians will learn at the meeting and greatly adapt to the needs of large-scale production lines.



Parameters			
Machine Model	ISC-1000		
Equipment size/ Equipment weight	H1600 X W700 XL1200 200Kg	Power	AC220V; 50/60Hz 1.5KW
Light pipe type	Closed Tube	Maximum tube voltage	50KV
Maximum tube current	1.0mA	Focus size	0.1X0.1mm
Magnification	15~30 times	Maximum view window	25mm
Resolution	20lp/mm	Detection area	1060X800mm
Maximum inspection size	800mm	Radiation dose	<0.5μSv/h

## Automatic specimen cutting machine for micro section

### Features

- PCB factory physical laboratory Metallurgical sample cutting (bare board)
- This machine adopts red light positioning, and can find the sample cutting point quickly and precisely.
- This machine adopts PLC control system, machine works stably and easy operating.
- Machine adopts drilling and routing principle to avoid sample deformation, in order to make sure the precision of the cutting.
- During sample cutting, when operator set the sample size, the machine will cut automatically and finish working when the micro-section is finally get out by operator.
- The infrared protection device will protect operator from wrong operation damage and protect safety.



Parameters			
Machine Model	ISC-1000	ISC-1000	ISC-1000
Control mode	PLC	PLC	PLC
Power	2800W	3000W	3200W
Depth	280mm	380mm	380mm
Machine dimension	W 680*D 520*H 1400mm	W 680*D 620*H 1400mm	W 760*D 620*H 1400mm
Working deck	Natural Marble	Natural Marble	Natural
Power supply	220V , 110V	220V , 110V	220V , 110V
Sample size	5*5~45*45mm	5*5~45*45mm	5*5~50*50mm
Router bit spec.	Diameter 2.0~2.4mm ,3.175mm	Diameter 2.0~2.4mm,3.175mm	Diameter 2.0~2.4mm,3.175mm
Rotate speed	24000rpm	24000rpm	30000rpm
Language	Chinese/English	Chinese/English	Chinese/English
Press power type	Pneumatic flat pressure type	Pneumatic flat pressure type	Pneumatic flat pressure type
Air pressure	0.5Mpa	0.6Mpa	0.6Mpa
Weight	230kg	260kg	300kg
Option	Safety protection device		Safety protection device
Consumable	PCB router bit: cutting 80pcs micro-section need change 1 router bit (different sample might affect the router bit life span)Dust collection bag: it is recommended to clean once a week and replace one in 6 months.		

## ISC218 2-axis Drilling Machine

### Features

- Notes: The drilling speed depends on the thickness of the plate, the number of plates and the hole size. The drills on the 2\*1.6mm PCB, for 0.3 holes the drilling speed is more than 460 holes/min; 0.5 holes, and the drilling speed is more than 510holes/min.



Parameters			
Machine Model	ISC218		
Spindle Quantity	2	Spindle Speed	160-180krpm ABL/Westwind(Optional)
Machine beam	Jinan natural granite, the machine body is high precision, less deformation and highly stable	Max. Drilling speed	460-500hole/min
Machine Dimension	2200*2000*2000mm	Spindle cooling method	Water cooling
X,Y,Z-axis Stroke	560mm*700mm*40mm	Tool Changer	4*220pieces Upper-tool 4*300-piece Lower-tool magazine(Optional)
Spindle Spacing	560mm	Tool Changer Mode	Antomatic Tool Change
X,Y-axis Drive	Imported High-power Servo Motor (Guaranteed Transmission Speed)	X,Y-axis Measurement System	Imported Closed Linear Scale
Z-axis Drive	Imported Servo Motor	Air Pressure	6.5-7.5bar
Feed Rate X,Y-axis	60m/min	Broken Tool Detection	Laser tool detector
Feed Rate Z-axis	30m/min	X,Y,Z-axis Ball Screw	NSK high precision lead screw (fast, quiet)
Max. Working Area	2*560mm*700mm	XY Linear Guide	Rexroth P-precision Linear Guideway
Drilling Diameter	Φ0.2mm-Φ6.35	Temperature	22±2°C/45%-65%
Drilling Accuracy	±0.025mm	Power Supply	3PH-AC380V+PE,50/60HZ 15KVA
Positioning Accuracy	±0.004mm	Noise	≤75dBA
Replicate Positioning Accuracy	±0.0025mm	Machine Weight	8000kg

## ISC228 2-axis Drilling Machine

### Features

- Natural granite, the machine body is high precision, less deformation, highly stable, high hardness, non-rust, acid and alkali resistance etc."
- Drive System: AC Servo Motor with large torque, non-step to lose, strong anti-interference, high precision."
- Screw Guide: Taiwan brand, high precision & speed, long wear-resistant time etc.
- Spindle: "Domestic well-known brand, high precision & speed, stably, reliably etc."
- Control System: "Using Professional PCB Drilling & Milling System, distinguishing Gerber, ROU file formats, automatic configuration parameters, operating easily, safely and conveniently."
- Dust-proof System: Lock-type closed foot press, better for dust absorption, effective prevention of pin collision.



Parameters	
Machine Model	ISC228
Spindle Quantity	2
Machine Beam	Marble
Max. Working Area	550mm*650mm
Motor Drive	3-axis Servo Motor
Feed Rate X,Y-axis	20m/min
Drilling Diameter	Φ0.4mm-Φ6.35mm
Positioning Accuracy	0.02mm/300mm
Replicate Positioning Accuracy	0.01mm
Spindle Speed	42--60krpm /min
Spindle Cooling Method	Water cooling
Tool Change Mode	Antomatic Tool Change
Ball Screw	Taiwan Grinding Ball Screw(10mm Lead range)
Linear Guide	Taiwan HIWIN High Precision Linear Guide
Power	2kw
Voltage	220V±10%
Air Pressure	0bar
Machine Dimension	1900*1550*1550mm
Machine Weight	1950kg

## ISC418 4-axis Drilling Machine



### Features

- The drilling speed depends on the thickness of the plate, the number of plates and the hole size. The drills on the 2\*1.6mm PCB, for 0.3 holes the drilling speed is more than 460 holes/min; 0.5 holes, and the drilling speed is more than 510holes/min.

Parameters			
Machine Model	ISC418		
Spindle Quantity	4	Spindle Speed	160-180krpm ABL/Westwind(Optional)
Machine beam	Jinan natural granite, the machine body is high precision, less deformation and highly stable	Max. Drilling speed	460-500hole/min
Machine Dimension	3300*2000*2000mm	Spindle cooling method	Water cooling
X,Y,Z-axis Stroke	560mm*700mm*40mm	Tool Changer	4*220pieces Upper-tool 4*300-piece Lower-tool magazine(Optional)
Spindle Spacing	560mm	Tool Changer	Automatic Tool Change
X,Y-axis Drive	Imported High-power Servo Motor (Guaranteed Transmission Speed)	X,Y-axis Measurement System	Imported Closed Linear Scale
Z-axis Drive	Imported Servo Motor	Air Pressure	6.5-7.5bar
Feed Rate X,Y-axis	60m/min	Broken Tool Detection	Laser tool detector
Feed Rate Z-axis	30m/min	X,Y,Z-axis Ball Screw	NSK high precision lead screw (fast, quiet)
Max. Working Area	4*560mm*700mm	XY Linear Guide	Rexroth P-precision Linear Guideway
Drilling Diameter	Φ0.2mm-Φ6.35	Temperature	22±2°C/45%-65%
Drilling Accuracy	±0.025mm	Power Supply	3PH-AC380V+PE,50/60HZ 15KVA
Positioning Accuracy	±0.004mm	Noise	≤75dBA
Replicate Positioning Accuracy	±0.0025mm	Machine Weight	8000kg

## ISC618 6-axis Drilling Machine



### Features

- The drilling speed depends on the thickness of the plate, the number of plates and the hole size. The drills on the 2\*1.6mm PCB, for 0.3 holes the drilling speed is more than 460 holes/min; 0.5 holes, and the drilling speed is more than 510 holes/min.

Parameters			
Machine Model	ISC618		
Machine Model	6	Spindle Speed	160-180krpm ABL/Westwind(Optional)
Spindle Quantity	Jinan natural granite, the machine body is high precision, less deformation and highly stable	Max. Drilling speed	460-500hole/min
Machine beam	4420*2000*1680mm	Spindle cooling method	Water cooling
Machine Dimension	560mm*700mm*40mm	Tool Changer	4*220pieces Upper-tool
X,Y,Z-axis Stroke	560mm	Tool Change Mode	Automatic Tool Change
Spindle Spacing	Imported High-power servo motor (Guaranteed transmission speed)	X,Y-axis Measurement System	Imported Closed Linear Scale
X,Y-axis Drive	inear Motor/Imported servo motor	Air Pressure	6.5-7.5bar
Feed Rate X,Y-axis	75m/min60m/min	Broken Tool Detection	Laser tool detector
Feed Rate Z-axis	50m/min30m/min	X,Y,Z-axis Ball Screw	NSK high precision lead screw (fast, quiet)
Max. Working Area	6*560mm*700mm	Linear Guide	Rexroth P-precision Linear Guideway
Drilling Diameter	Φ0.2mm-Φ6.35mm	Temperature	22±2°C/45%-65%
Drilling Accuracy	±0.025mm	Power Supply	3PH-AC380V+PE,50/60HZ 15KVA
Positioning Accuracy	±0.004mm	Noise	≤75dBA
Replicate Positioning Accuracy	±0.0025mm	Machine Weight	8000kg



## ISC580R Semi-Auto V-CUT Machine

### Features

- The stainless steel body is sturdy and durable, which is easy to maintain and clean."
- The depth dial can precisely adjust the distance between the upper and lower cutter shafts, and the cutting accuracy can reach  $\pm 0.03\text{mm}$ , which easily solves the problem of V-pit depth.
- Equipped with self-produced tungsten steel V-CUT blade, it is sharp and wear-resistant and durable."
- Can be used for 240V voltage
- The attachment plate and the track plate are all wire cutting, which improves the precision of the machine.
- It is easy to operate, just put a large stack of plates to be processed on the conveyor belt, the belt will automatically transport the board to be processed into the processing link, and the V-CUT can be easily completed.



### Parameters

Machine Model	ISC580R
Notch Width	Height 70mm, Width 580mm
Thickness	1.0-3.2mm
Speed	12m/min
Cardboard V Speed	10 holes/time(10 Cutting/Up&Down)
Fiberboard V Speed	8 holes/time(10 Cutting/Up&Down)

## ISC-661 Automatic Pinner Machine

### Features

- Natural granite, the machine body is high precision, less deformation, highly stable, high hardness, non-rust, acid and alkali resistance etc."
- Drive System:  
AC Servo Motor with large torque, non-step to lose, strong anti-interference, high precision."
- Screw Guide:  
Taiwan brand, high precision & speed, long wear-resistant time etc.
- Spindle:  
"Domestic well-known brand, high precision & speed, stably, reliably etc."
- Control System:  
"Using Professional PCB Drilling & Milling System, distinguishing Gerber, ROU file formats, automatic configuration parameters, operating easily, safely and conveniently."
- Dust-proof System:  
Lock-type closed foot press, better for dust absorption, effective prevention of pin collision.



### Parameters

Machine Model	ISC-661
Spindle Speed	"24000r/min6"
Spindle Power	Frequency Power
Machine Dimension	1080*485*1270mm
Spindle Spring Collet	$\Phi 3.175\text{mm}(1/8")$
Max Processing Size	660mm*560mm(can be customized)
Min Processing Size	200mm*150mm
Drilled Printed Board	Yes
Plate Thickness	10mm
Feeding Method	Automatic Pinning Nail
Drilling Accuracy	$\pm 0.1\text{mm}$
Controller	Mitsubishi PLC
Power	Single Phase 220V/50HZ 1.6KW
Air Pressure	5KG/CM
Air Consumption	180L/min

## ISC-900 Hole Inspection Machine

### Features

- The stainless steel body is sturdy and durable, which is easy to maintain and clean."
- The depth dial can precisely adjust the distance between the upper and lower cutter shafts, and the cutting accuracy can reach  $\pm 0.03\text{mm}$ , which easily solves the problem of V-pit depth.
- Equipped with self-produced tungsten steel V-CUT blade, it is sharp and wear-resistant and durable."
- Can be used for 240V voltage
- The attachment plate and the track plate are all wire cutting, which improves the precision of the machine.
- It is easy to operate, just put a large stack of plates to be processed on the conveyor belt, the belt will automatically transport the board to be processed into the processing link, and the V-CUT can be easily completed.



### Parameters

Machine Model	ISC-900
Inspection Item	Hole size, Porous, Lack of Holes, Groove Length, Angle, Round Hole Debris
Precision	$\pm 0.15\text{mm}$
Check Board Size	Max 650*650mm Min 200*300mm
Plate Thickness	0.3~3.0mm
Hole Diameter	Above 0.1mm
Maximum Depth Ratio	10:01
Check No. of holes	Unlimited
Inspection Speed	2.5、5、7.5、12.5(M/min)
Operating System	Win7
Closing machine	Stacking Machine
Dimension	1500*1100*1200 mm
Power	1KW
Power Supply	Single Phase AC220V 50/60Hz

## ISCP-1 MICROCRE Specimen Polishing Machine

### Features

- The ISCP-1 MICROCRE specimen polishing machine is suitable for polishing the polished metal material, a bright as mirror metal surface is available, for observation and measurement of micro structure under a microscope.

### Technical Parameters

1. Polishing Disc Diameter:  $\Phi 200\text{mm}$
2. Polishing Disc Rotation Speed: 1400r/min 900r/min(customized)
3. Power: 220v, 50Hz
4. Dimensions: 360×300×320mm
5. Net Weight: 16kg

### After-sales Service

- One year free warranty and lifetime maintenance.



## ISC-CZ231 Auto CCD System Self-aligning Screen Printer Machine

Table Areas: 660\*900mm  
 Printing Areas: 500\*600mm  
 Printing Speed: 600P/H  
 Max. Screen Frame: 800\*1000mm  
 Air Pressure: 5-7kg/cm<sup>2</sup>  
 Voltage: 380V/6A  
 Dimension: 2250\*1150\*1600mm  
 Weight: 850kg

### Features

- Geared motor: GPG Taiwan.
- PLL, Frequency Converter, Screen: Aelta Taiwan.
- Photoelectric Switch, Proximity Switch: Omega Japan.
- Fiber: Autonics Korea.
- Switching Mode Power Supply: Meanwell Taiwan.
- Auxiliary Relay: Schenider Germany.



## ISC1300-650 Gantry CNC v-cut machine



### ADVANTAGES

- The spindle speed of spindle is up to 12,000 RPM.
- The machine comes with a spray system.
- Servo controller and servo motor adopt Japanese Fuji original.
- Gantry marble stand, strong and durable.



### Parameters

Working Parameters of CNC V-Cut Machine	ISC1300-650	Power Source and air source parameters	
Cutting material	All kinds of PCB	power	3.5kw
Minimum thickness of PCB	0.4mm	frequency	50HZ
Maximum thickness of PCB	3.2mm	voltage	220V
Minimum size of PCB	120 x 50mm	air pressure	0.5kg/m <sup>2</sup>
Maximum size of PCB	1500 x 1200mm	Parameters of V-Cut Blades	
Minimum remaining thickness	0.10mm	Tooth material of blades	Imported NF-D-M
Operational height	850mm	Tooth number of blades	20 teeth,30 teeth
Cutting speed	5-60m/min	Outer diameter of blades	120mm
Rotating speed of main spindle	6000-12000 r/min	Inner diameter of blades	25.4mm
Remaining thickness V processed precision	≤ ±0.04mm	Thickness of blades	2mm
V-slot space V processed precision	≤ ±0.04mm	Tooth angle of blades	15°-90°

Dwell diameter	2.0/3.175mm optional	Positioning mode	Dowel positioning and automatic return of boards
Minimum distance between the center of dowel and the first line	4mm	Space between dowels	100-200mm

### Size and weight of CNC V-CUT machine

Model No.	X	Y	Installation dimensions			weight
			length	width	height	
DL-1300	1300	650	2150mm	1800mm	1800mm	3200kg
DL-1500	1500	650	2300mm	1800mm	1800mm	3500kg
DL-1500A	1500	800-12000	2350mm	2100mm	1800mm	4500kg

## ISC-JX33R Metallographical microscope

### Note

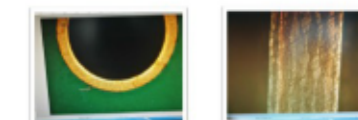
Green oil can be checked both in bright and dark field; with light, back light observed function.

### Usage

Used in measuring and analysis the IC component and cutting sample.

### Characteristic

- High precise which we use intelligent soft to reduce man-made error.
- Two-point distance, two-lined distance, round, radius, diameter and angled dimension can be measured and analyzed.
- Shot photo easily and output all kinds testing report.
- The units of mm, um, inch, mil, microinch can be exchange freely.



### Parameters

Machine Model	ISC-JX33R
Type	Episcopic/Diascopic illumination type
Optical magnification	50X~1000X
Electronic magnification	90X~2160X
Eyepieces	10X (one of eyepieces with scale)
Objective Lenses	5X, 10X, 20X, 50X, 100X
Illuminating system	12V100W Transmission reflection and capable of episcopic and diascopic illumination, 12V100W halogen light
CCD	3 million pixels
Splitting ratio	0:100
Test accuracy	±0.0006mm
Configure	One body one software, one micrometer, HP computer which not including operating system, 23" LCD, one catalogue, two bulbs

## ISC-TB22Y Peel Strength Tester

### Usage

- The ISC-TB22Y Peel Strength Tester is designed and manufactured in accordance with 2.4.8 of the IPC-TM-650 Test Method Manual, equipped with a high quality gauge, designed for measure the peel strength of copper foil, copper-clad laminates and printed circuit boards.

### Specification:

- With the high precision tension meter of LED digital display screen, it is convenient for users to view the results quickly and intuitively.
- General design of soft plate and hard board, can replace the fixture by itself and apply to multiple products.
- Equipped with limited protection, special software can be built up and down.
- Three units N fg lb can be switched.
- Use the copper foil laminate with enough size to cut the three samples, the width is 3.2 mm and the length is at least 50.8mm. The cutting should be neat, without burr and gap to install the sample on the fixture and repeat the test three times.

Executive standard: IPC-TM-650

- GB/T 4677—2002 7.1.1 标准 standard
- GB/T 13557—92 标准 standard



Parameters	
Machine Model	ISC-TB22Y/ISC-TB23R
Load range	0~50N (50N 100N 200N 500N Option)
Precision	Precision:0.01N
Largest route	120mm
Machine dimension	Length 340* Width 450 * Height 630mm
Speed	0~55mm/min
Power supply	AC220V 50Hz
Frequency	30W
Weight	20Kg

## ISC-LW-02 Line Width Tester

### Usage

This machine is mainly used to measure the widths of inner and outer range of semi PCBs after etching (before solder masking). In addition, the distance between two lines, distance between holes and edge and diameters of different holes and arcs can also be measured.

Expanding usage: it can also be used to measure widths of IC wafer, thickness of films, LCD boards, etc.

### Characteristic

- It adopts LED red light to locate, which can confirm the measurement region quickly.
- It has a high-precision mechanical adjustment device. You can do coarse or rigour adjustment to the focus distance.
- This equipment adopts high-sensitivity color CCD, which makes images clearer.
- It is equipped with annular light source, which is continuously adjustable. So it stands different modes include upper line, lower line, round holes, blind holes and some other measurement modes.
- The administrator/operator mode offers a good way to management.
- The software search edge automatically, which makes measurements faster and more accurate.
- The software is convenient to operate with three keys of a mouse.
- It can export the measurement data and images quickly and easily.



Parameters	
Machine Model	ISC-LW-02
Resolution	0.70~5.20μm/pixel
Electronic magnification	90×
Optical magnification	0.7×~4.5× continuously adjustable
Light source	LEDannularlight(continuouslyadjustablebrightness) LED orientationlight(red)
CCD	high-sensitivity color CCD 780mm
Max measurable board width	0.53mm×0.4mm~3.4mm×2.5mm
Sight arrange	960×700×1220mm
Appearance dimension (without computer)	(L×W×H)
Weight (excluedecomputer)	145kg/3.5kg
Power supply	220V~±10%/50Hz
Operation temperature	0°C~40°C



125krpm Pressure Foot Cup for Schmoll



180krpm Pressure Foot Cup for Schmoll



Pressure Foot Cup for Schmoll



Pressure Foot Cup for Tongtai Driller



Pressure Foot Cup for Italy JEGE



Pressure Foot Cup for Hans Driller (F6L)



Switch Pressure Foot Cup for Hans



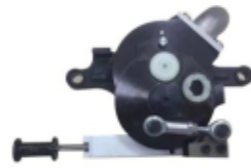
Pressure Foot Cup for Tasikawa



Pressure Foot Cup for Tongtai Driller (New Type)



Pressure Foot Cup for HiCNC Router



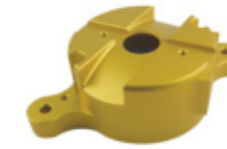
Pressure Foot Cup for Hitachi (MARK30/50)



Pressure Foot Cup for AENGR outer (Flat / Concave)



Pressure Foot Cup for Mania



Pressure Foot Cup for Timax



Pressboard for Taliang



Pressure Foot Insert Base for Qianghua



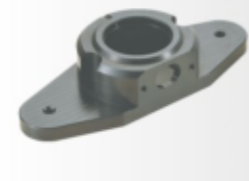
Pressure Foot Cup for Sogotec Router



Pressure Foot Cup for AEMG Router



Pressure Foot Cup for AEMG Driller



Pressure Foot Cup for Taliang Router 1 (50mm)



PF Optical Fiber Base for Takisawa



Dust Hood for Timax (Magnet)



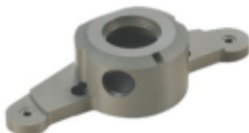
Dust Hood for Timax (Small)



Dust Hood for Timax (Induction Line)



Pressure Foot Cup for Taliang Router 2 (50mm)



Pressure Foot Cup for Taliang Router 3 (39mm)



Pressure Foot Cup for Taliang Router 4 (50mm)



Pressure Foot Cup for Taliang Router 5 (Butterfly Shape 50mm)



Pressure Foot for Schmoll (Plastic)



Pressure Foot for Schmoll (Metal)



Pressure Foot Base for 125krpm Schmoll



Exchange Slide Table for Taliang



Pressure Foot Cup for Taliang Driller



Pressure Foot Cup for BTF (62mm)



Pressure Foot Cup for BTF (80mm)



Pressure Foot Cup for Linsong



Pressure Foot for Tasikawa



Pressure Foot for AEMG



Pressure Foot Blowing Guide for AEMG



L Type Pressure Foot for Tongtai



Air Cylinder  
CJ2KB16-XC10-DCK1197K  
for Hitachi Machine



Air Cylinder  
CJ2KB16-XC10-DCK1195K  
for Hitachi Machine



Air Cylinder  
CDQ2KWB25-J2844-50  
for Hitachi Machine/ADC Manipulator



Opening&Closing Cylinder  
CQ2A32D-J6646-3.5  
for ADC Claw



Air Cylinder  
CM2RB20-N1360-16 for  
Takisawa Machine



Air Cylinder  
CJ216-TWUIDK132-0015Z for  
Takisawa Machine



Air Cylinder  
CDJ2WB16-30-B for  
HiCNC Machine



Air Cylinder  
CJ2KB16D-E5088-XC10



Pressure Foot Switch Cylinder  
CUKW10-25D-X1391  
for Hitachi Machine



Left&Right Cylinder  
DIDM-16N5+16N15(O)-L/R  
for Tongtai Machine



Air Cylinder  
DIDM-16N5+16N15-010  
for Takisawa Machine



Air Cylinder  
for CJ2B16-32-U1000011  
for Timax Machine



Air Cylinder  
CDJ2B16-45-B



Air Cylinder  
CDM2B20X20



Air Cylinder  
MAL-16X25-11



Air Cylinder  
CDJ2B16-35-XCB



Air Cylinder  
CJ2B16-20+15-XC10  
for HiCNC Machine



Air Cylinder Rexroth  
0822032202  
for Schmolz Machine



Air Cylinder  
CJ2B16-15 for  
Tongtai Machine



Air Cylinder  
CJ2B16-25 for  
Hans Machine



Stroke Air Cylinder  
CDQ2KWB25-50D  
for AEMG Driller



Air Cylinder  
CDU10-30D



Air Cylinder  
MAD16X35



Air Cylinder  
DIDM-16N10+16N15-021



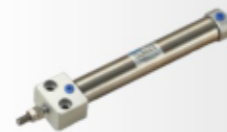
Air Cylinder  
CJ2B16-30 for  
Timax/Qianghua Machine



Air Cylinder  
CJ216-TWH323-0015  
for AEMG Machine



Air Cylinder  
CDJ2RA16-60 for  
Taliang Machine



Air Cylinder  
CDJ2RA16-75 for  
Takisawa Machine



Air Cylinder  
KCP95SDB32-100



Air Cylinder  
PB16X25-S-U-CD491B



Air Cylinder  
PB16X30U



Air Cylinder  
CQ2B40-25DZ



Air Cylinder  
CDU10-10D for  
Tongtai Machine



Air Switch Cylinder  
SMD2L-1010 for  
Tongtai Machine



Air Cylinder  
CUJB10-15D for  
Hans Machine



Air Cylinder  
CUJB10-6DM for  
Hans Machine



Air Cylinder  
CD85N16-25-B



Air Cylinder  
SC40X75-S



Air Cylinder  
SDA40\*10



Air Cylinder  
CDSB16-15DCM

Air Cylinder

Air Cylinder



Air Cylinder  
SDAS40X100



Air Cylinder  
CDU10-25D



Air Cylinder  
CU16-15D



Air Cylinder  
CXSM10-10



Air Cylinder  
CDJ2RA16-60-B



Air Cylinder  
CDJ2B16-20-B



Air Cylinder  
CDJ2B16-25+10



Air Cylinder  
CH99P014.800.2 P119295



Air Cylinder  
CJ2KB16D-E7512-XC10



Air Cylinder  
CJ2WB16-35



Parker Air Cylinder  
P1A-S025DS-0025



Collet Wrench SM220



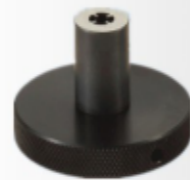
Collet Wrench for  
D1331 Series



Collet Wrench for  
D1331-26/M320 Series



Collet Wrench for  
Schmoll Machine



Collet Wrench  
for 1722



Collet Wrench for  
H916C/H920B



Collet Wrench for  
MCT60



Collet Wrench for  
SC-63



Collet Wrench for  
TI60



Manipulator for  
Schmoll Machine 1



Manipulator for  
Schmoll Machine 2



Manipulator for  
Schmoll Machine 3



Manipulator for  
Hans Machine 1



Manipulator for  
Hans Machine 2



Manipulator for  
Hans Machine 3



Manipulator Claw for Taliang  
Opening&Closing Air Cylinder



Manipulator Claw for  
Mania Machine



Manipulator for  
Hi CNC Machine A



Manipulator for  
Hi CNC Machine B



Manipulator for  
Hi CNC Machine C



ADC Manipulator for  
Hitachi Machine



Manipulator for  
Tongtai Machine



Manipulator Griper for  
Hans/Daying Machine 1



Manipulator Griper for  
Hans/Daying Machine 2



Manipulator Griper for  
Schmoll Machine



Manipulator Griper for  
Schmoll Machine 2



Manipulator Griper for  
ItalyMachine



Tool Grapper U-groove for  
Schmoll Machine



Manipulator PistonRod  
for Schmoll Machine

Air Cylinder

Manipulator



Tool Pod

Tool Cassette





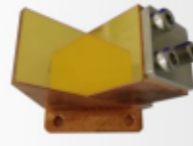
Focusing Mirror for Mitsubishi Laser Driller



Control Plate LASTER-7



Scanning Mirror



Triangular Mirror



Protective Mirror



Bronze Mirror



Renishaw RH100\*30 D05A Reading Head



HEIDENHAIN LIDA 27 Reading Head



LIDA47 Reading Head for Schmoll Machine



LIDA407 Linear Scale for Schmoll Machine



HEIDENHAIN LIDA405 Linear Scale



V-CUT Reading Head for Schmoll Machine



Spindle Power Cable 3263 for AEMG Machine



Broken Bit Detection Board&Card Sleeve for Hans Machine



Z-axis Motor for Schmoll Machine



Photoelectric Switch EE-SX671/671R



Two Color Digital Pressure Switch Sensor



Oxygen Sensor



Infrared CO2 Sensor



MATRIX Solenoid



Control Module Hm152 for Hitachi Machine



IO Card for Hitachi Machine



Oil Cooler Control Plate for Hitachi Machine



Hard Disk for Schmoll Machine(Wthin System)



Tool Detection OPTECH-TC1 for Hitachi Machine



CDD Tool Detection OP-TS4 for Hitachi Machine



Key Control Plate for Schmoll Machine



Yaskawa Server Motor



Tool Detection for Schmoll/Posalux Machine



Tool Detection for Posalux Machine(New Type)



BDD Dust Sensor MAKE 30/50 for Hitachi Machine



NCPB Tool Detection



Merveille Tool Detection DS-5V-M



Tool Detection Y-TEK-2 for Tongtai Machine



Tool Break Detection Board CBD-V1



Amplifier HPX-NT2



Amplifier TS-24-01 for Tongtai Machine



CBD Coil for Tongtai Machine



Needle Reader for Hitachi Driller



OMRON E3X-NA11 Sensor

Detection Tool

Detection Tool



Fibre-optical  
HPF-S263-B



Fibre-optical  
ES2-321A-15



Fibre-optical  
ES2-321A-05



Fibre-optical  
HPF-T009-S3



Fibre-optical FU-59



Fibre-optical FTA-280L



Gripper Sensor MK5-BV13329  
for Schmol Machine



Sensor Mk5138



CKD-KOHSwitchSensor



Sensor D-M9N



Sensor D-F8N



Tool Detection for  
Vega Machine



Tool Detection for  
AEMG/Henghai Machine



Tool Detection for  
AEMG Machine



Tool Detection for Linsong/  
Sogotec Machine



Tool Detection for  
Hans Machine



Tool Detection for  
Taliang Machine 1



Tool Detection for  
Taliang Machine 2



Tool Detection for  
Taliang Machine 3



Tool Detection for  
Taliang Machine 4



Tool Detection & Amplifier  
UB-24V-1-A  
for Taliang Machine



Z-axis Guide & Slide  
for Hitachi Machine



Lead Screw for  
Hitachi Driller



Z-axis Lead Screw for  
AEMG Machine



Fuse 7.5A  
for Hitachi Machine



Fuse 10.0A for  
Timax Machine



Universal Joint  
FD15-5-080



Universal Joint  
JA15-5-080



Solenoid 2W-160-15



Solenoid CKD



Solenoid for  
Schmol Machine



Tool Cassette Handle  
for Hans/Schmol Machine



Torque Test Tool for  
Westwind Collet



PIN Forceps



Manual Ring Machine 1



Manual Ring Machine 2



Support Rod Y2020,  
Y3007 for Hitachi Machine



Support Rod for  
Schmol Machine



Pressure Gauge



Residual Thickness Gauge



Block V for Tongtai Machine



Front PIN Clip for Tongtai Machine



Hinge for Tongtai Machine



Laser Tool Detection Base for Tongtai Router



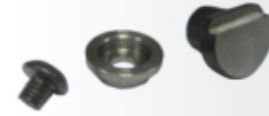
Pressure Foot Connect Rod for Hitachi Machine



Radial Bearing QIC



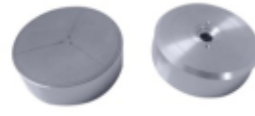
Thrust Bearing QIC



Fixed PIN for Hitachi Machine



Air Flotation Foot for Hans Machine 1



Air Flotation Foot for Hans Machine 2



Hinge for Schmoll Machine



Tool Cassette Assembly for Schmoll Machine



Cable for Vega Machine



Cable for Schmoll Machine



Punch Pin for Tongtai Machine



Punching&Grinding Parts



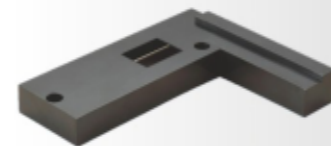
Tool Cassette Fixed Base for Hitachi Machine 1



Tool Cassette Fixed Base for Hitachi Machine 2



Tool Cassette Fixed Base for Hitachi Machine 3



Tool Break Detection Cover Plate for Hitachi Machine



Vacuum Pipe Joint for Hitachi/Timax Machine



Vacuum Pipe Joint for Schmoll/Takisawa Machine



Vacuum Pipe Joint for Taliang Machine



Vacuum Pipe Joint for AEMG Machine



Vacuum Pipe Joint for Taliang Machine



Vacuum Pipe Joint for Tongtai Machine



Vacuum Pipe Joint for Tongtai Machine



Vacuum Pipe Joint for Hans/Vega Machine



Vacuum Pipe Joint for Qianghua Machine



Vacuum Pipe Joint for Lihsong Machine



Mushroom Head for Hans Driller



Mushroom Head for Hans Driller 1



Mushroom Head for Schmoll Machine



Insulating Sheet for Schmoll Machine



Mushroom Head for Tongtai Machine



Mushroom Screw for Schmoll Machine



96mm Guide Rod for Tongtai Machine



123mm Guide Rod for Tongtai Machine



Guide Rod for Schmoll Machine



Guide Rod MARK30 for Hitachi Machine



**40374**  
Application: D1686-10/11/12/13/  
14/15/16/18/19 Spindle



**H912B**  
Application: Hitachi Driller



**16703**  
Application: M320 series  
Spindle



**H916C**  
Application: Hitachi ABL/H916  
Spindle



**1722**  
Application: Hans Driller matched  
Spindle



**38730**  
Application: M320 series Spindle



**1769**  
Application: 1769-06 Spindle



**1822**  
Application: 1822 Spindle



**41844**  
Application: ABW-125, ABW-170 Spindle  
D199-06A/10, D1473-07



**17593**  
Application: Spindles  
D1199/1210/1131/  
1531/1263/ D-1199-03  
ABW 110/ Excellon  
ABW110 D1201-06/ Posalux110  
Schmoll: D1331-03/ 17/ 20A/  
Pluritec:  
D1201-20/ 21/ 23/ 27/ 30/ 31/36  
D1331-08/ 13/ 19/ 24  
D1263-01/ 03/ 04/ 07  
D1531-02A/ 09A  
Pluritec 62HFZA D1201-19



**17508**  
Application: M320&ABW80  
series Spindle  
Excellon P/N: 216844-10,  
D1251-03, Excellon AWB80,  
M320-60/ Dynamotion



**34381**  
Application: D1331-26 Spindle



**AW160**  
Application: AW160-08 Spindle



**37462**  
Application: D1201 Spindle,  
D1331-24/30/41/42 D1531-08/42



**41928**  
Application: Takisawa/AEMG Driller  
Westwind 1331-47 Spindle



**1010**  
Application: Excellon  
1000/1010/2000 Spindle



**CR2000**  
Application: Excellon  
420/480/820/880



**FR06**  
Application: Dachuan Router

**CHK3.175 Collet**

Application: X-Ray  
Target Driller



**NUT**

Application: X-Ray  
Target Driller



**14066**  
Application: MCT 60 R Spindle

**ER16 Collet**

Application: BTF Router



**ER11 NUT**

Application:  
BTF Router



**263504**  
Application: Sogotec/Taliang Router

**Er11 Collet**

Application: BTF Router  
precision: 0.005& 0.008u



**ER16 NUT**

Application:  
BTFmilling machine



**230505**  
Application: HB50B, LSW-69,  
Taliang, Klingelnberg, Hitachi  
routing machine CP-368

**08085A1**

Application: Westwind M320-24  
Spindle



**CHB3.175**

Application: NSK Air Sander Spindle



**063503**  
Application: Precise Spindle  
Taliang, Klingelnberg  
drilling&milling Spindle, DA-63,  
TYPE-168 Spindle



**263508**



**39730**  
Application: D1331-36 Spindle



**39773**  
Application: M320-64C,  
ABWR80



**40508518**  
Application: JECE Spindle, Lisong,  
Nikebao, Taliang Router,  
CNC Engraving& Milling machine



**SM220**  
Application: Westwind  
882/MCT-200&220



**41611**  
Application: Westwind  
1331-48/49/51 Spindle



**HR08A**  
Application: Hitachi Router



**RKOU auxiliary Collet**  
Application: RKOU Machine



**Hitachi auxiliary Collet**  
Application:Hitachi Driller



**Taliang auxiliary Collet A**  
Application:Taliang Driller



**Taliang auxiliary Collet B**  
Application:Taliang Driller



**Taliang auxiliary Collet**  
Application:Taliang Driller



**Dongtai auxiliary Collet**  
Application:Tongtai Driller



**Dongyuan auxiliary Collet**  
Application:Dongyuan Driller



**AEMG auxiliary Collet**  
Application:AEMG Driller



**Takisawa auxiliary collet**  
Application:Takisawa Driller



**Schmoll auxiliary Collet**



**Grooving machine Collet**



**Old Timax auxiliary Collet**



**Pin machine Collet**



**Takisawa auxiliary Collet (short)**  
Application:Takisawa Driller



**Mania auxiliary Collet**  
Application:Mania Driller



**Tenma auxiliary Collet 2003**  
Application:Timax Driller



**Xuelong auxiliary Collet**  
Application:Xuelong Driller



**Tenma auxiliary Collet 2006**  
Application: Tenma Driller



**Tenma auxiliary Collet 2008**  
Application: Tenma Driller



**Songlin auxiliary Collet**  
Application: Songlin Driller



**Pin machine Collet**  
Application: Pin machine



**Beveling Machine Collet**  
Application: Beveling machine



**B8 Collet**  
Application: Schaublin collet



**Collet sets of Grinding machine(chaomei)**  
Application:Full Automatic  
needle drilling&grinding machine



**Target machine Collet 26MM**  
Application: Target machine



**AEMG auxiliary Collet**  
Application:AEMG Driller



**Takisawa auxiliary collet**  
Application:Takisawa Driller



**Schmoll auxiliary Collet**



**Collet set of Grinding machineMDP-10**  
Application: grinding machine



**Target machine Collet 30MM**  
Application: Target machine



**Wendi machine Collet**



**Xingweike auxiliary Collet**



**Hitachi Routing Machine Collet**



**Grinding machine Collet core**



Hitachi Big Hole New Style  
(Stainless Steel Titanium Plating)



Hitachi Small New Style  
(Stainless Steel Titanium Plating)



Hitachi Big Hole  
(Stainless Steel Titanium Plating)



Hitachi Small Hole  
(Stainless Steel Titanium Plating)



Hitachi Standard  
(Stainless Steel Titanium Plating)



Hitachi Big Hole  
(Wear-resisting PA66)



Hitachi Small Hole  
(Wear-resisting PA66)



Hitachi Small Hole 6 Slots  
(Wear-resisting PA66)



Hitachi Soft Rubber(MARK10)



SCHMOLL 5 Slots  
(Wear-resisting PA66)



Posalux /Hans General Use  
(Wear-resisting PA66)



Schmoll Small Hole  
(Wear-resisting PA66)



Schmoll Big Hole  
(Wear-resisting)1



Schmoll Big(POM)



Schmoll (Wear-resisting)2



Dongxing 28.7mm  
(Wear-resisting PA66)



Tongtai E Shape (POM)



Tongtai H Shape (POM)



Tongtai H Shape (with hole)



Tongtai H Shape Earthy  
Yellow(Wear-resisting PA66)



Taliang Big Hole Blue(PP)



Taliang Big Hole Purple(PP)



Taliang Small Hole Yellow(PP)



Taliang Small Hole Orange(PP)



Taliang Small Hole 6 Slots Red



Taliang Big Hole Green



Taliang Small Hole Yellow(PP)



Takistaki Small Hole  
(Wear-resisting PA66)



Takistaki Square QIC



Takistaki Soft Rubber



Takistaki Small Hole  
(Stainless Steel Titanium Plating)



Vega 18krpm Blue  
(Wear-resisting PA66)



Vega Switch  
(Wear-resisting PA66)



Vega 18krpm



Vico 4 Groove  
(Wear-resisting PA66)



AEMG 6 Groove



AEMG Small Hole  
(Wear-resisting PA66)



AEMG Big Hole  
(Wear-resisting PA66)



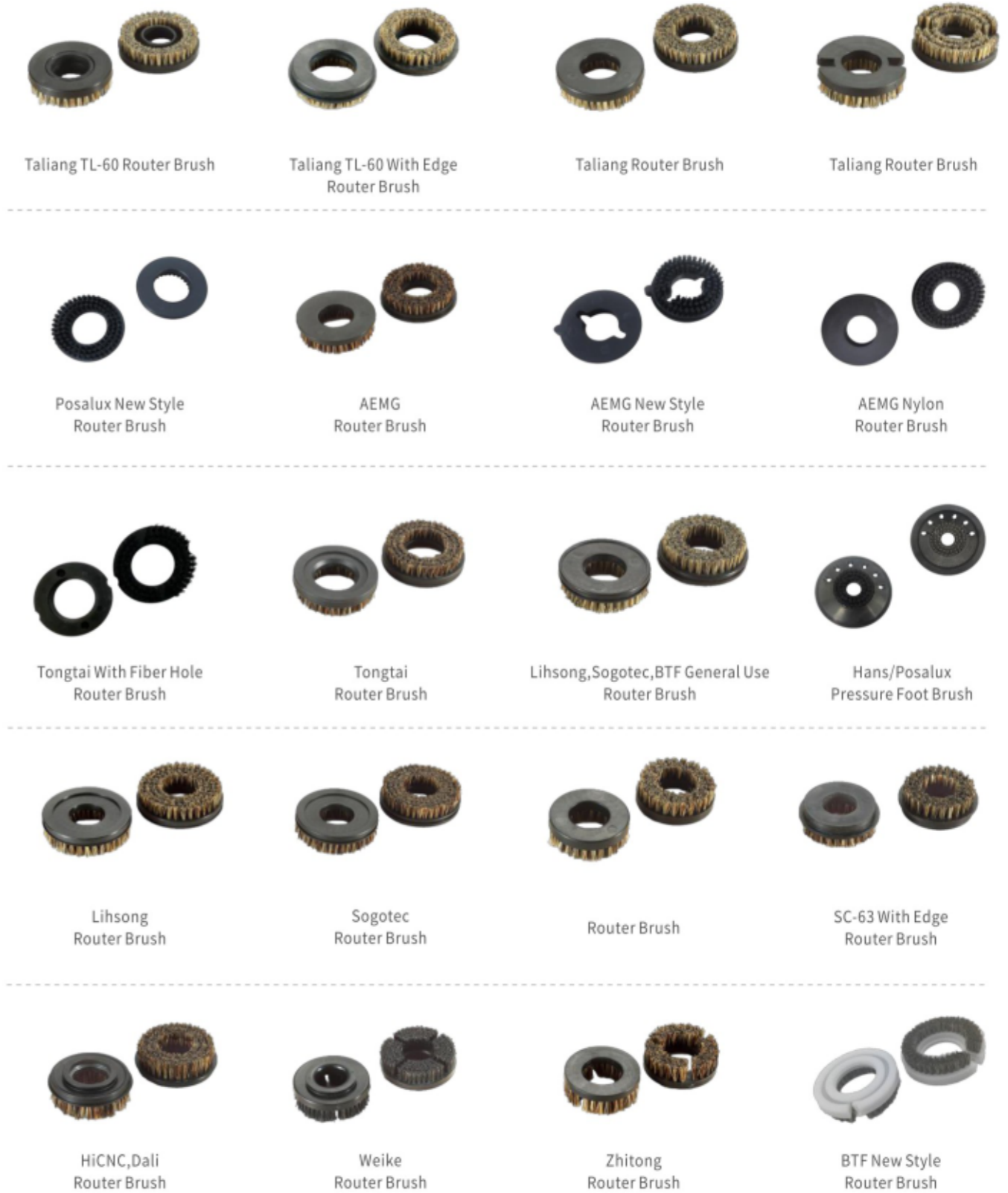
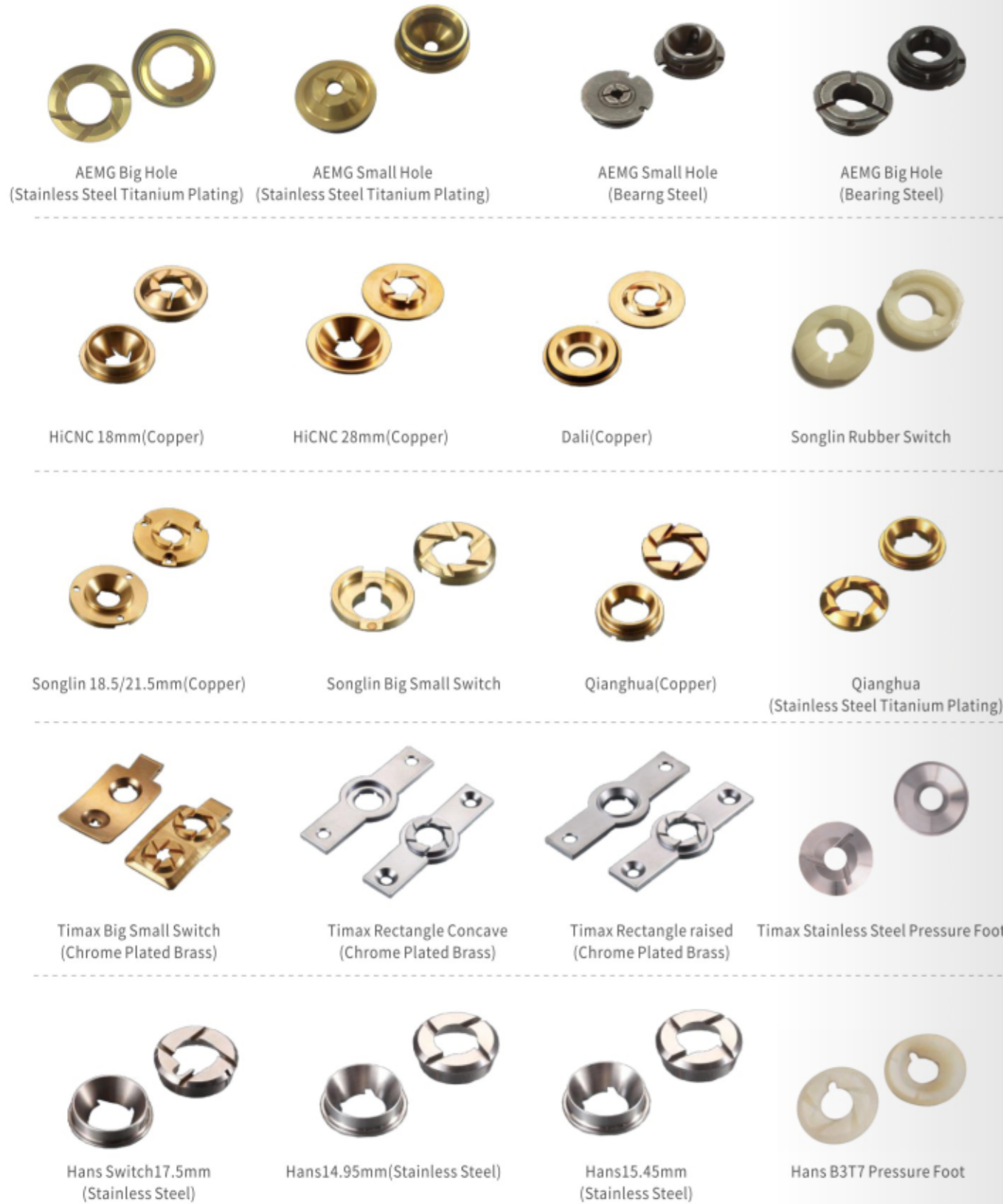
AEMG 3 Groove



AEMG Oval

pressure foot inserts

pressure foot inserts



pressure foot inserts

Pressure foot brush



BTF Router Brush  
(OD50mm)



Dachuan Router Brush  
(OD54mm)



Schmoll Router Brush  
(OD44mm)



Schmoll Router  
Nylon Brush



Hitachi Router Brush  
(OD75mm)



Hitachi Router Thick Brush  
(OD50mm)



Posalux Router Brush



Engraving Machine Brush  
(OD65mm)



Italy Router Brush  
(OD82mm,84mm)



Italy Router Brush  
(OD28mm)



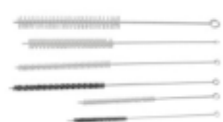
Tube Brush



Groove Brush



Collet Plastic Handle Brush



Tube Brush



Collet Brush



Plastic Handle Brush



Soundproof Ring



Manual V-CUT  
Bearing Rubber Ring



Linear Bearing



Axe Tyrant



MULTEMP PS No.2 2.5kg  
Maintenance Oil



Klueber NBU15 1kg



NSK Screw  
Maintenance Oil PS2 80g



DOW Chuck  
Maintenance Oil



CRC Rust Preventive Oil



ROCOL Collet  
Maintenance Oil



THK AFC Screw Oil 70g



THK Guide Rail Oil



Tungsten Steel V-CUT Tool



PCD Edge Cutter



Dust Hose Tube



PP Rubber Roller



V-CUT Machine  
Rubber Roller



Coating Roller



Dust Hose Tube



PP Rubber Roller



Tongtai Machine Filter



Schmoll Machine Filter



Hans Machine 020AO Filter



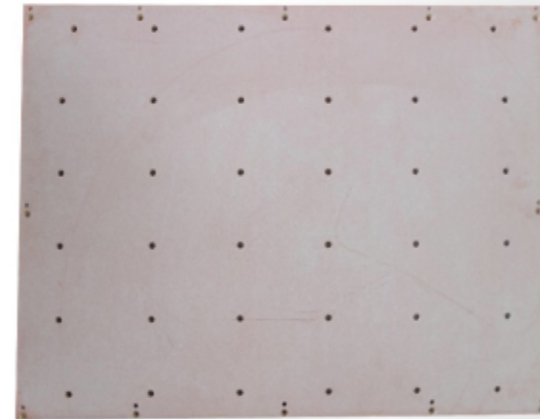
Hans Machine 015AA Filter

Pressure foot brush

Pressure foot brush



## Bakelite Plate



### Usage:

- Grinding Bakelite used for the bottom plate in PCB drill machine,router machine,testing bottom plate. Good flatness,thickness tolerance within  $\pm 0.1\text{mm}$ .

### Features:

- Good electrical performance at room temperature, good machining performance

Specification				
Item name	bakelite	Model No	XPC	
Base material	Bleached wood pulp paper + phenolic resin		rate:1:4	
project	Test Method	unit	result	
flame retardant rating	A	--	94-HB	
the dielectric coefficient	C-96/20/65 (in25 °C oil)	KV/mm	10 (ok)	
volume resistance	C-96/20/65 C-96/20/65+C-96/40/90	$\Omega$	$5 \times 10^{11} - 10^{12}$ $5 \times 10^9 - 10^{11}$	
surface resistance	C-96/20/65 C-96/20/65+C-96/40/90	$\Omega$	$5 \times 10^{10} - 10^{12}$ $5 \times 10^9 - 10^{11}$	
insulation resistance	C-96/20/65 C-96/20/65+D-2/100	$\Omega\text{-cm}$	$5 \times 10^{10} - 10^{11}$ $10^7 - 10^9$	
rate of induced electric	C-96/20/65 C-96/20/65+D-48/50	--	4.0-5.0 4.5-5.5	
induced electric positive	C-96/20/65 C-96/20/65+D-48/50=	--	0.035-0.045 0.04-0.05	
bending strength(transverse)	A	$\text{kg/mm}^2$	12-17	
heat resistance(120min)	A	$^{\circ}\text{C}$	130 (ok)	
impact strength(parallel)	A	$\text{kg-cm/cm}^2$	2.8-3.4	
bonding strength	A	kg	400-550	
vertical parallel	compression strength	A	$\text{kg/mm}^2$	29-34 19-24
water absorption	E-24/50+D-24/23	%	0.12-0.16	
acetone resistance				

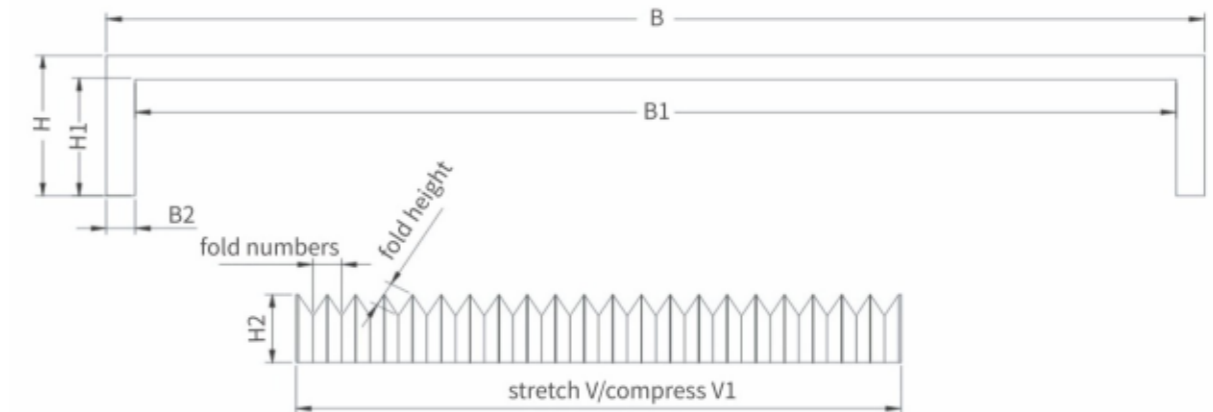
## Dust Cover

### Features:

- Flexible Flexible accordion cover,Commonly known as leather tiger. Outside use Germany nylon cloth,inner use PVC board support,the edges are clamped with stainless steel.his shield has the advantages of small compression and long stroke.Oil resistance, corrosion resistance, hard object impact without deformation;And with long life, good sealing, smooth walking, durable and other characteristics.To the use of machine tools to bring perfect results.The sealing speed can reach 200m/min.

The flexible organ type protective cover manufactured by our company is a series of products that can be combined at will.

- The raw material,appearance,pocessing method and sizes can be determined according to the actual situation.



specification				
Numbers	Item	Data	Remark	Shield construction material
B	total width			material nylon leather
B1	inner width			prop up PVC sheet
B2	single side width			junction plate Resin plate/iron plate
H	height			pulley copper or nylon bearing
H1	inner width			matching machine model
H2	total height			
W	fold numbers			
V	stretch length			
V1	compressed length			
HV	length of fold height			

## Wound Cotton Core

### Features

- The porous skeleton of the filter is precisely wined with PP yarn , made of different filtrating precision cotton core via control the winding density and the pore shape of the filter layer . The goods has a high filtration pressure, small inner and big outer of the filter pore's diameter, bring an excellent deep filtrating effect and can effectively remove suspended solids from the liquid fine particles.

### Specifications

- Accuracy Range: 0.5-100 $\mu$ m
- Length (L) : 10"、20"、30"、40"



## PP Filter

### Features

- The filter is made from PP meltblown microfiber, and has high porosity, less hindered force, big flow rate, excellent filter effects and the fiber is not easy to fall off. Apply to filtration in chemical solution, plating solution and a variety of acid-base solutions.

### Specifications

- Common length (L) specifications are: 10"、20"、30"
- Accuracy Range: 5 $\mu$ 、10 $\mu$ 、50 $\mu$



## Collar

### Features

- When drilling units on the bit; Selection of imported plastic strength and toughness, good elastic properties; A variety of colors to distinguish different specifications to meet the needs of drill bits.

### Specifications

- Outer diameter (a) : 7.6 $\pm$ 0.05mm
- Inner diameter (c) : 3.05 $\pm$ 0.05mm
- Height (b) : 4.6 $\pm$ 0.05mm



## PIN

### Features

- base for special steel, wear-resistant, and durable;
- Tolerance: +0.00/-0.01mm;
- Nail head: Round and Flat.

### Specifications

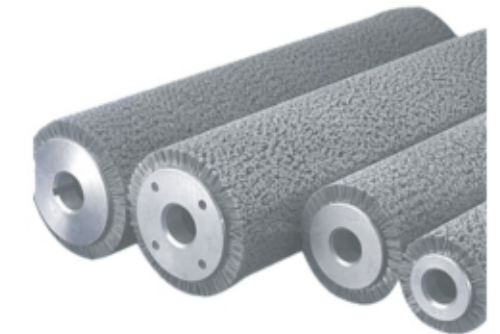
- Drilling pin: Diameter:  $\phi$ 3.1,  $\phi$ 3.12,  $\phi$ 3.15,  $\phi$ 3.175
- Length: 13, 15, 15.8, 18, 20, 22
- Milling board pin: Diameter:  $\phi$ 0.70-6.50 (interval 0.05)
- Length: 13, 15, 15.8, 18, 20, 22



## Nylon Grinding Brush

### Features

- Abrasive nylon tensile strength  $\geq$  7.84N/cm<sup>2</sup>
- Density between the wire and roller brush:  
 $\phi$ 0.5-0.7  $\geq$  2500 root/cm<sup>2</sup>  
 $\phi$ 0.7-1.0  $\geq$  2500 root/cm<sup>2</sup>



specification					
(mm)			Inch		
Outer Diameter	Length	Inner Diameter	Length	Outer Diameter	Inner Diameter
80	324	40	4	24	1
103	610	63	4	24	1 <sup>3/8</sup>
105	615	60	5 <sup>1/2</sup>	24	1
105	645	35	4 <sup>1/2</sup>	24	1
120	650	30	4	30	1
150	1430	60	4	40	1
220	300	50	3 <sup>5/8</sup>	24	1 <sup>3/8</sup>